

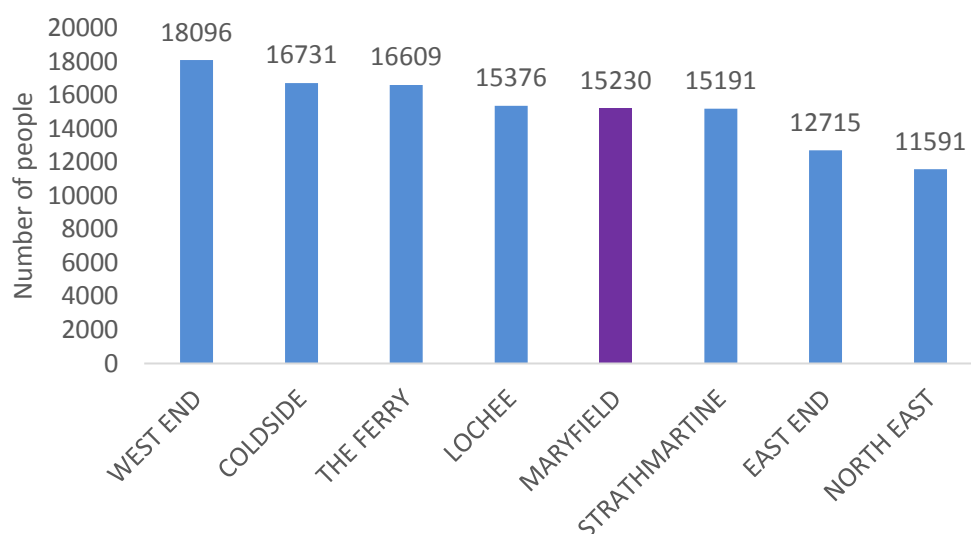


Maryfield Profile

Population

The population of Dundee, for people aged 18+ is 121,541. Chart 1 shows that 15,230 (13%) of Dundee's 18+ population lives in Maryfield.

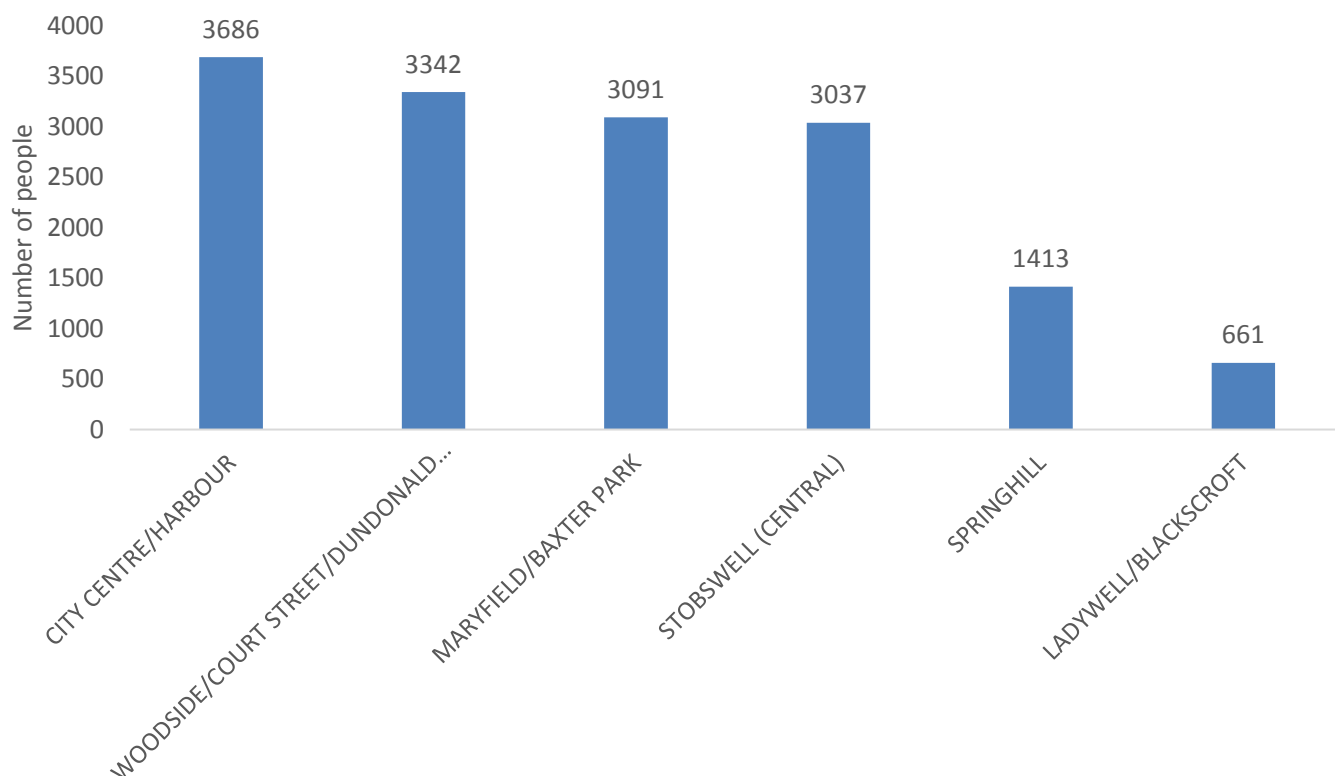
Chart 1 - Dundee's Population aged 18+ by LCPP



Source: Mid-year population estimates 2016, NRS

Within Maryfield there are 6 neighbourhoods. Chart 2 shows that the majority of Maryfield's 18+ population (3,686 people) live in the City Centre / Harbour neighbourhood.

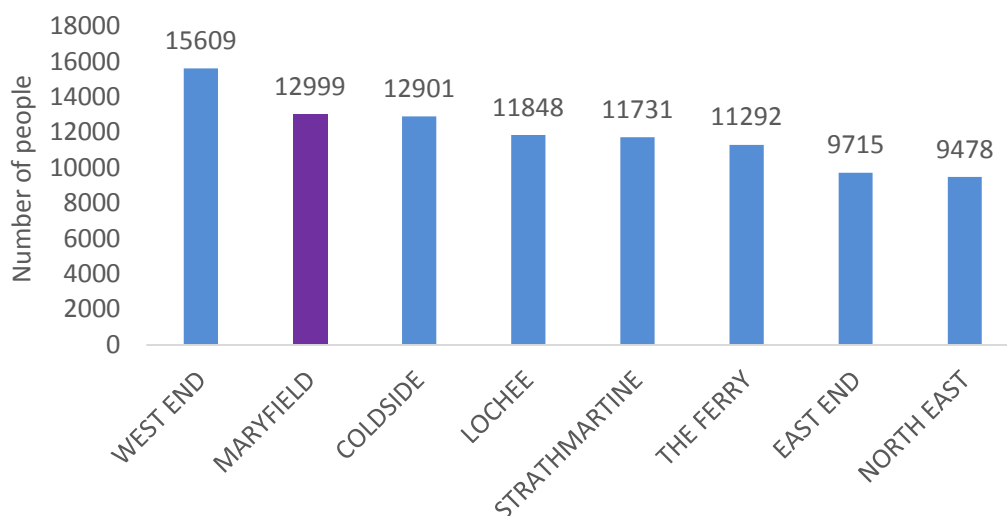
Chart 2 - Maryfield Population aged 18+ by Neighbourhood



Source: Mid-year population estimates 2016, NRS

The aged 18-64 population of Dundee is 95,574. Chart 3 shows that just under 13,000 (14%) of Dundee's aged 18-64 population lives in Maryfield, the second highest in Dundee.

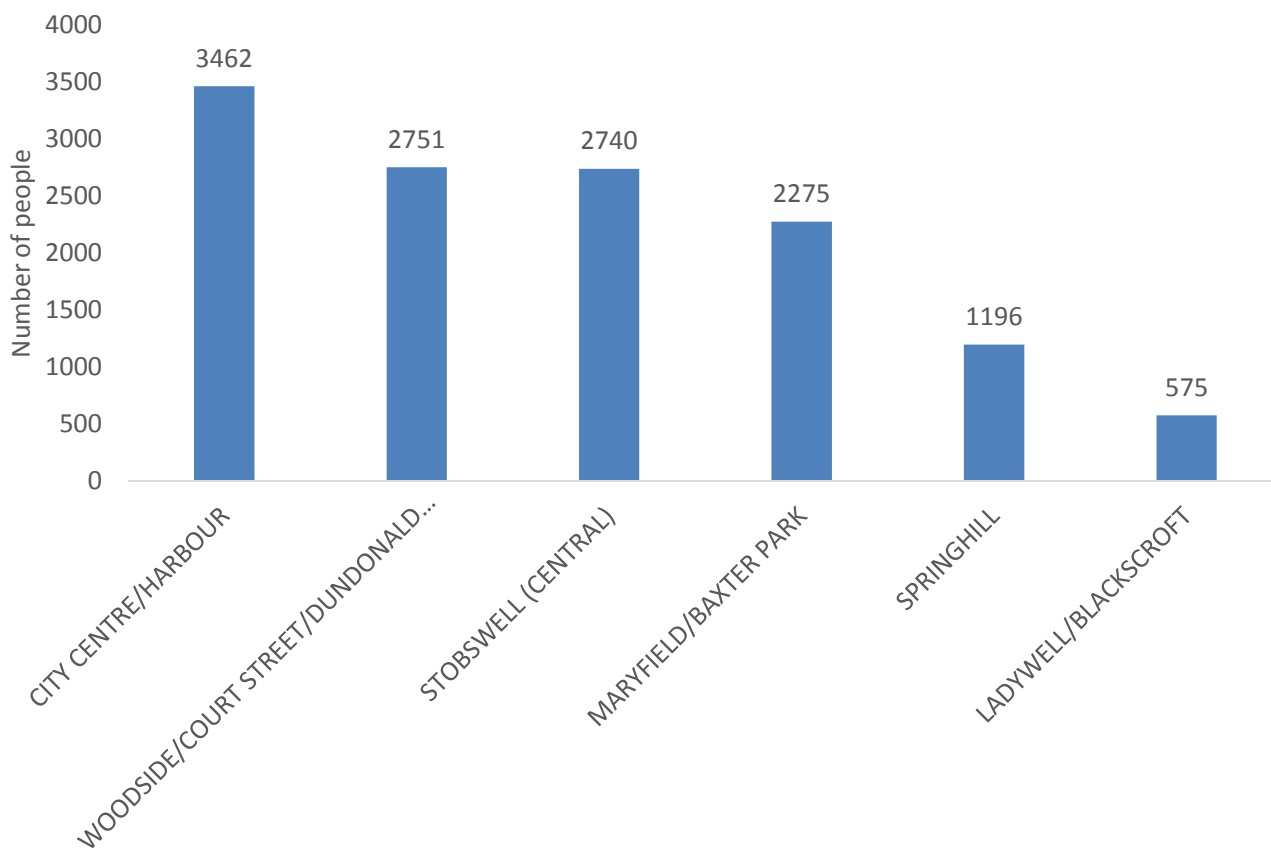
Chart 3 - Dundee's Population aged 18-64 by LCP



Source: Mid-year population estimates 2016, NRS

Chart 4 shows that over a quarter (3,462) of Maryfield's 18-64 population lives in the City Centre / Harbour neighbourhood.

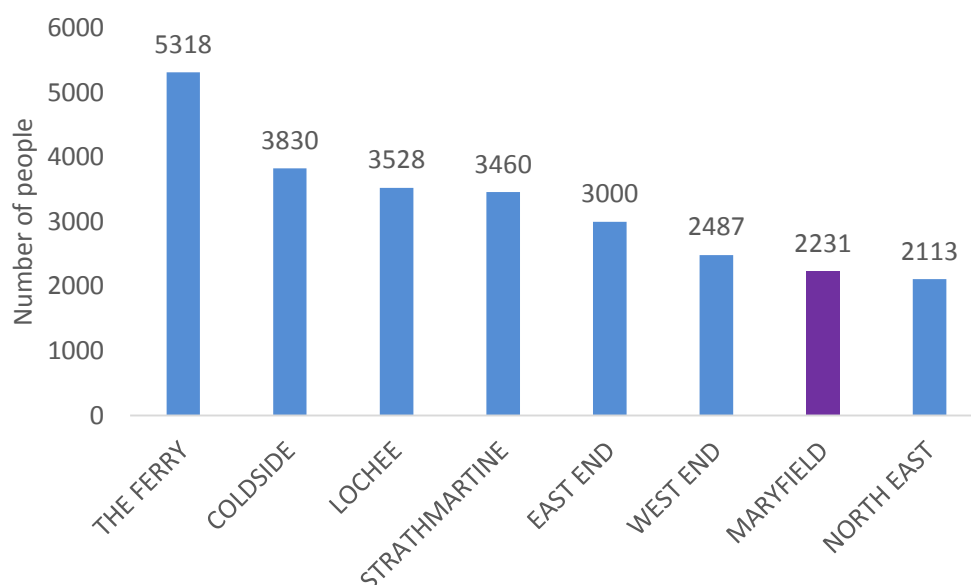
Chart 4 - Maryfield Population aged 18-64 by Neighbourhood



Source: Mid-year population estimates 2016, NRS

The aged 65+ population of Dundee is 25,967. Chart 5 shows that 2,231 (9%) of Dundee's 65+ year old population lives in Maryfield.

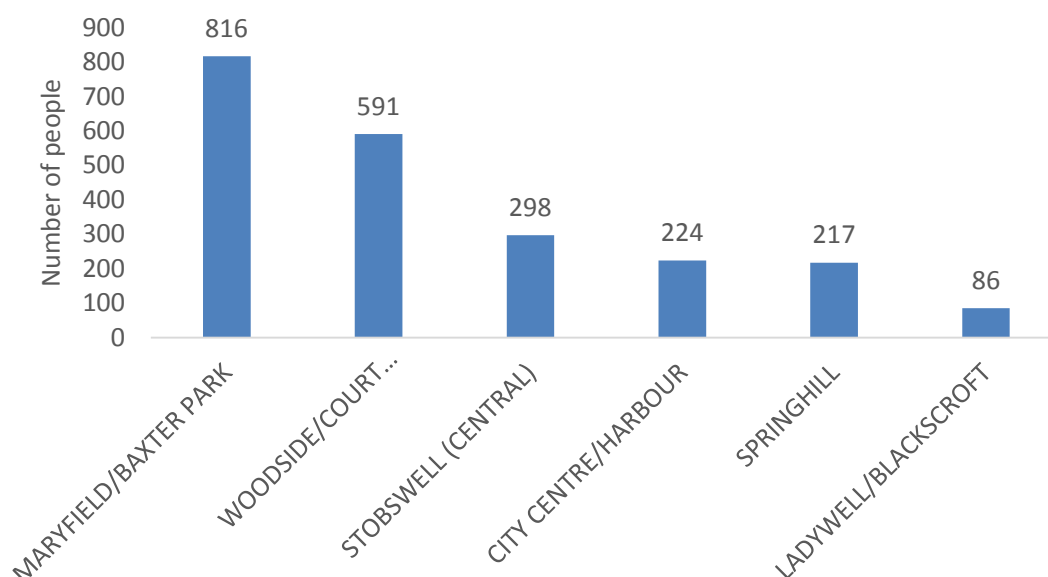
Chart 5 - Dundee's Population aged 65+ by LCPP



Source: Mid year population estimates 2016, NRS

Chart 6 shows that the majority of people aged 65+ live in the Maryfield/ Baxter Park neighbourhood of Maryfield.

Chart 6 - Maryfield Population aged 65+ by Neighbourhood



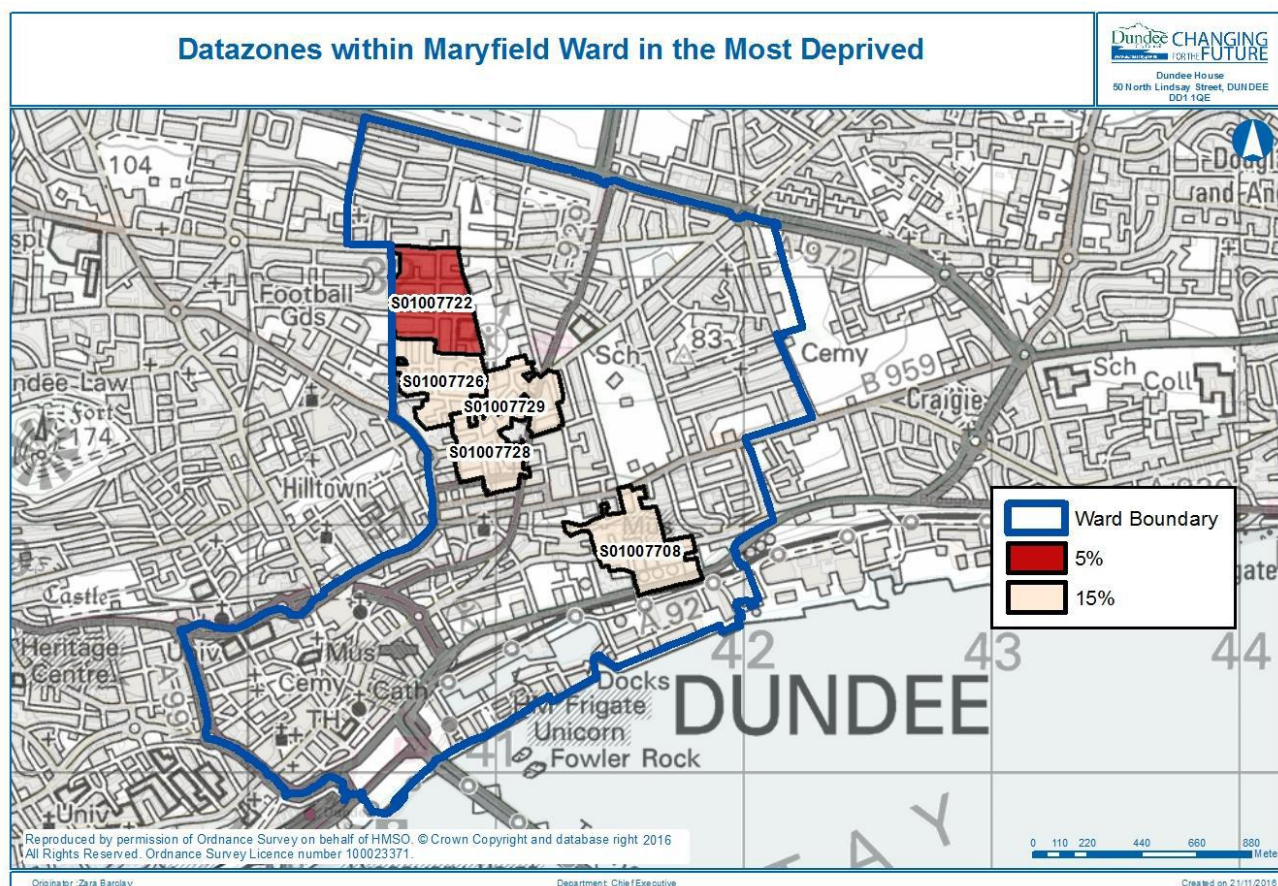
Source: Mid-year population estimates 2016, NRS

- City Centre/ Harbour has the highest number of people in the 18-64 age group.
- Ladywell/ Blackscroft has the lowest number of people in the 18-64 and 65+ age group.
- Maryfield/ Baxter Park has the highest number of people in the 65+ age group.

Deprivation

The Scottish Index of Multiple Deprivation (SIMD) is the Scottish Government's official tool for identifying places in Scotland suffering from deprivation. Deprivation in this context refers to the range of problems that arise due to the lack of resources or opportunities covering health, safety, education, employment, housing, access to services and financial aspects. The most recent SIMD was released by the Scottish Government in August 2016.

The map shows how many domains each data zone in the Maryfield LCPP which are ranked within the 5 - 20% most deprived datazones in Scotland.



Source: DCC Information & Research Team

Table 1 shows the percentage of Maryfield's population who live in the 5%, 15% and 20% most deprived datazones in Scotland. Woodside/ Court St/ Dundonald St is the area with the highest percentage (24.8%) of its population living in the 5% most deprived and it's also the area with the highest percentage (55.7%) of its population living in the 15% most deprived.

Table 1

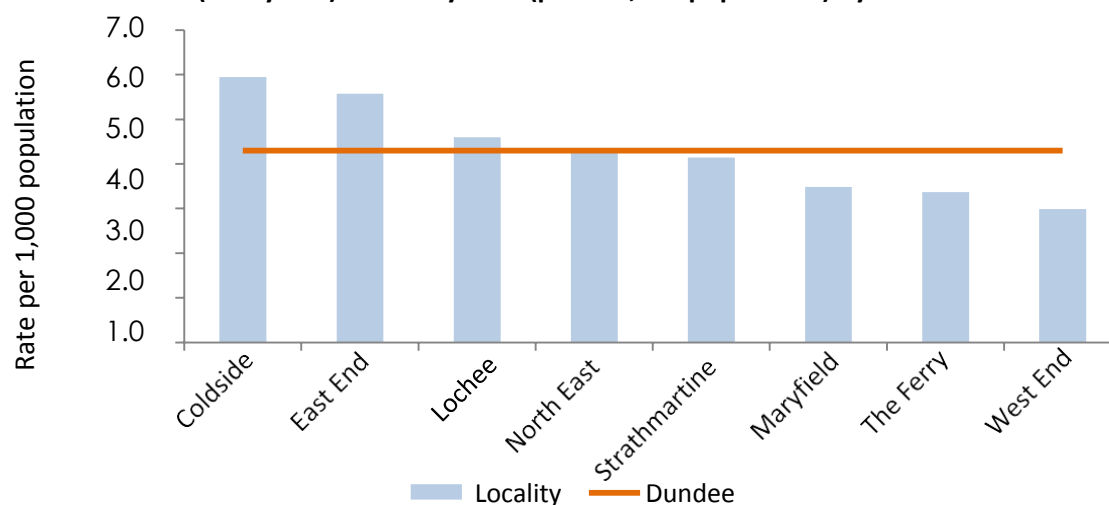
Community Area	Total Population	Pop living in DZ in the 5% MD	Pop living in DZ in the 15% MD	Pop living in DZ in the 20% MD
City Centre/Harbour	3,644	0.2%	1.1%	1.1%
Ladywell/ Blackscroft	1,017	0.0%	38.6%	38.6%
Maryfield/ Baxter Park	3,525	0.0%	0.0%	0.0%
Springhill	1,631	0.0%	54.4%	54.4%
Stobswell (central)	3,806	0.0%	53.2%	53.2%
Woodside/ Court St/ Dundonald St	3,838	24.8%	55.7%	55.7%

Source: Source: Scottish Government *Population in the 5/15% will be included within the 20%

Mortality

Chart 7 shows that Maryfield LCPP area has the third lowest premature mortality rates of all LCPP areas. The least deprived LCPP areas, West End and The Ferry, have the lowest premature mortality rates. Lochee, Coldside and East End all have higher rates than Dundee overall.

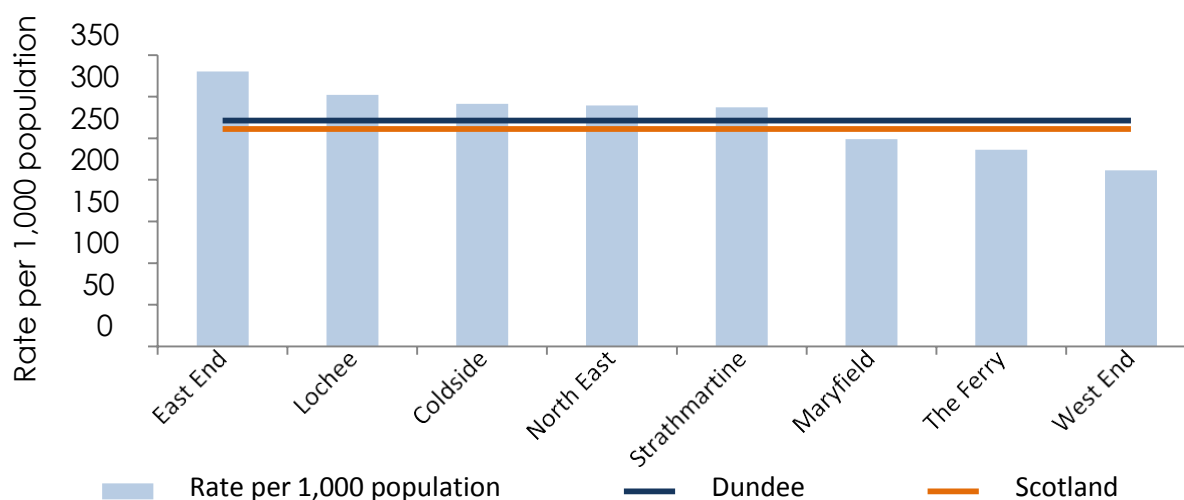
Chart 7 - Premature (< 75 years) Mortality Rate (per 100,000 population) by LCPP area



Source: National Records of Scotland (NRS) Annual Death Files & Midyear Population Estimates (Tayside Resident Based, All Ages) via Health Intelligence Team, Public Health, NHS Tayside

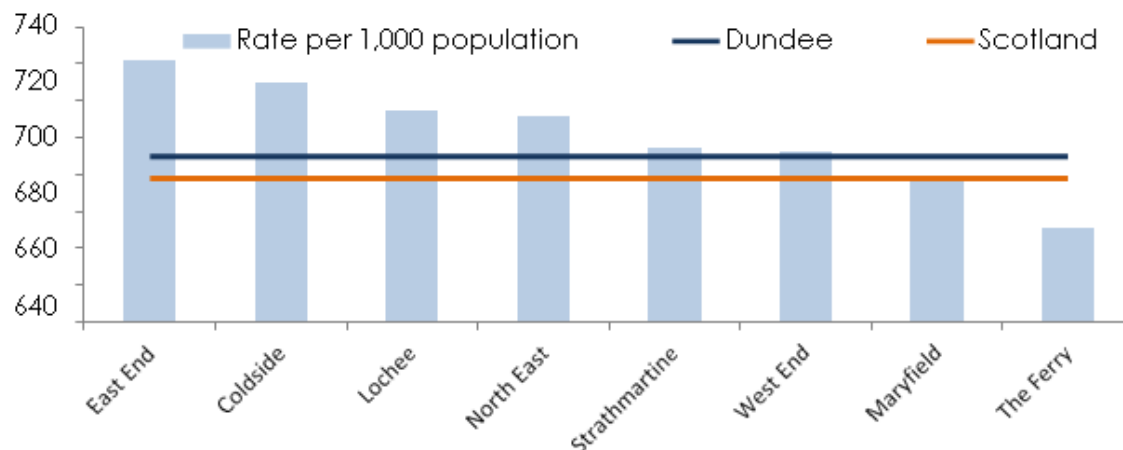
There is considerable variation in multi-morbidity rates between LCPP areas across the city. Chart 8 and 9 shows the rate of people (aged 16-64 and 65+) with one or more health conditions in each LCPP area, as compared with the Dundee and Scotland rates. Maryfield's rate for people who are age 16-64 and 65+ is the lower than the Dundee and Scotland rates.

Chart 8 - Rate per 1,000 of the population (aged 16 to 64) with one or more health condition by LCPP area, Dundee and Scotland



Source: Scotland Census 2011

Chart 9 - Rate per 1,000 of the population (aged 65 and over) with one or more health conditions by LCPP area, Dundee and Scotland

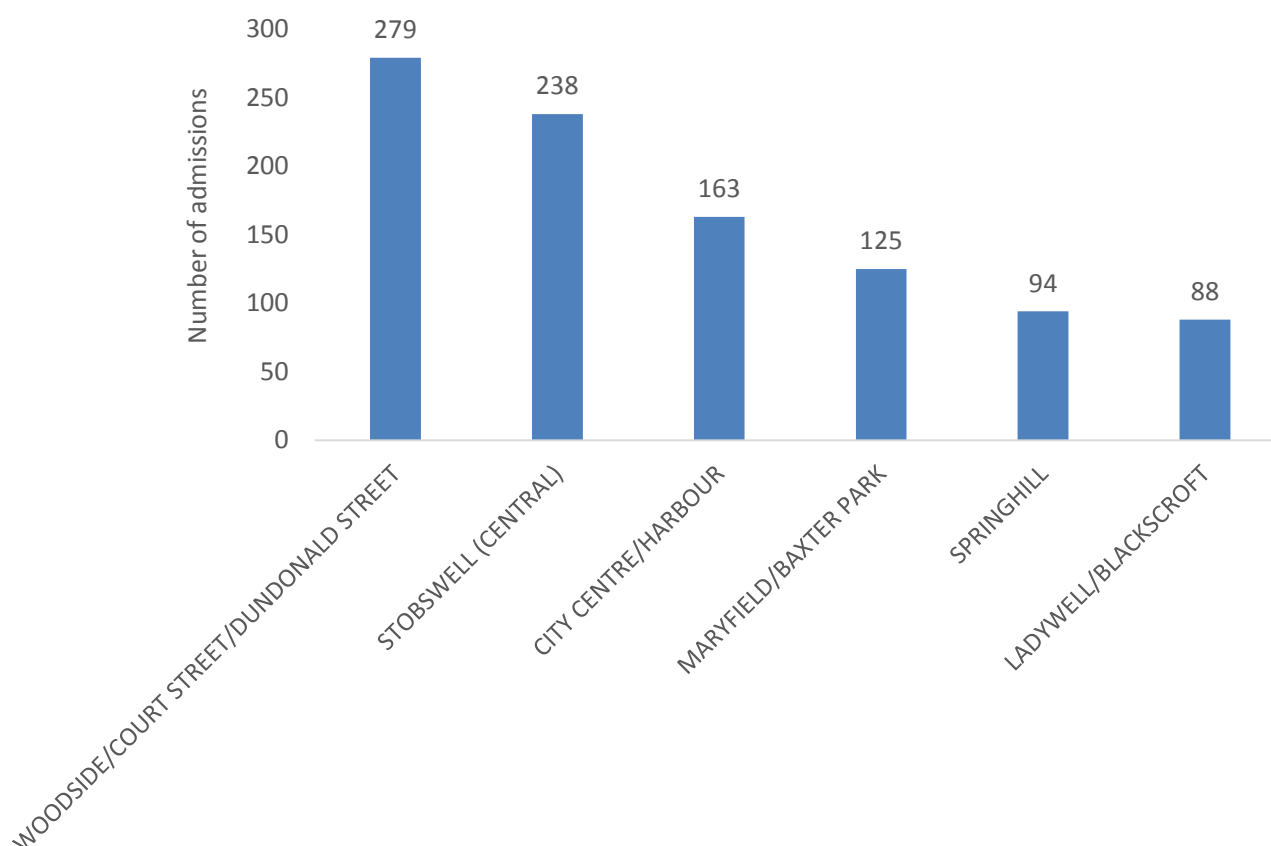


Source: Scotland Census 2011

All Emergency Admissions

Between October 2016 and September 2017, there were 8,035 emergency admissions in Dundee for people aged 18 - 64. Within Maryfield there were a total of 987 admissions. This means that 12% of Dundee's emergency admissions for people aged 18-64 came from Maryfield. Chart 10 shows the breakdown of these emergency admissions by neighbourhoods within Maryfield. Woodside/ Court Street/ Dundonald Street had the highest number of emergency admissions.

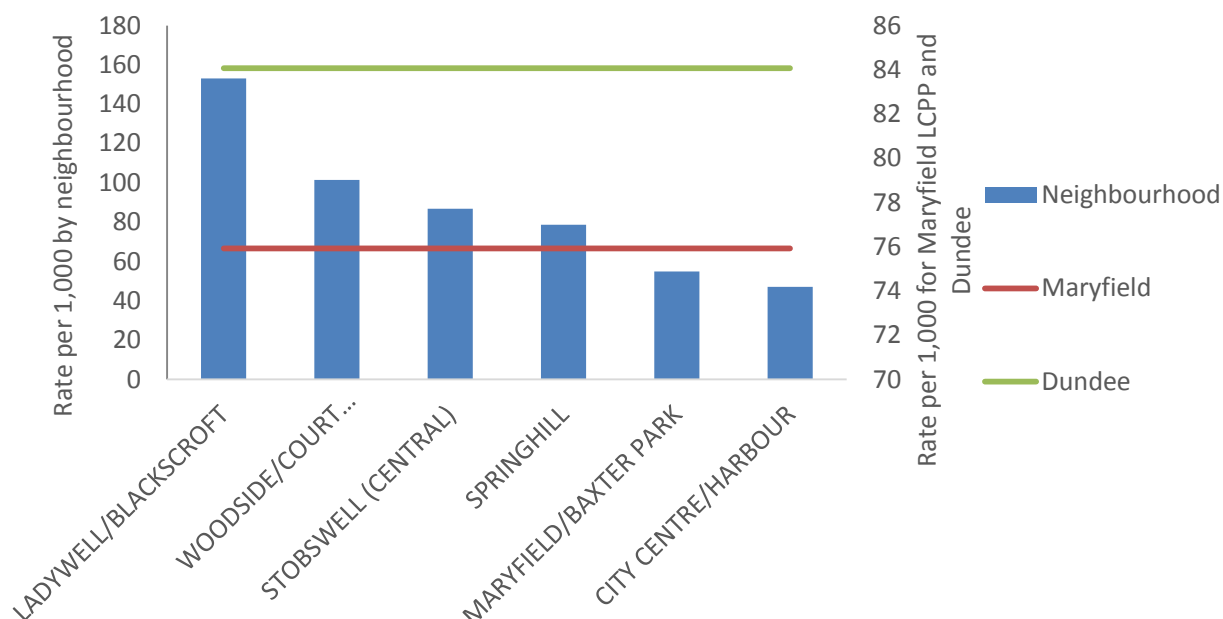
Chart 10 - Number of emergency admissions in Maryfield for people aged 18-64 by Neighbourhood, Oct 16 - Sept 17



Source: SMR 01, 04 & 50 Records

Although Woodside/ Court Street/ Dundonald Street had the highest number of emergency admissions for people aged between 18 - 64, when we compare this by rate per 1,000 people, chart 11 shows that with standardising the data and taking into account the population of each neighbourhood Ladywell/ Blackscroft has the highest rate of emergency admissions at a rate of 153 per 1,000 population. Ladywell/ Blackscroft had a higher rate than Maryfield by 102% and 82% higher than Dundee.

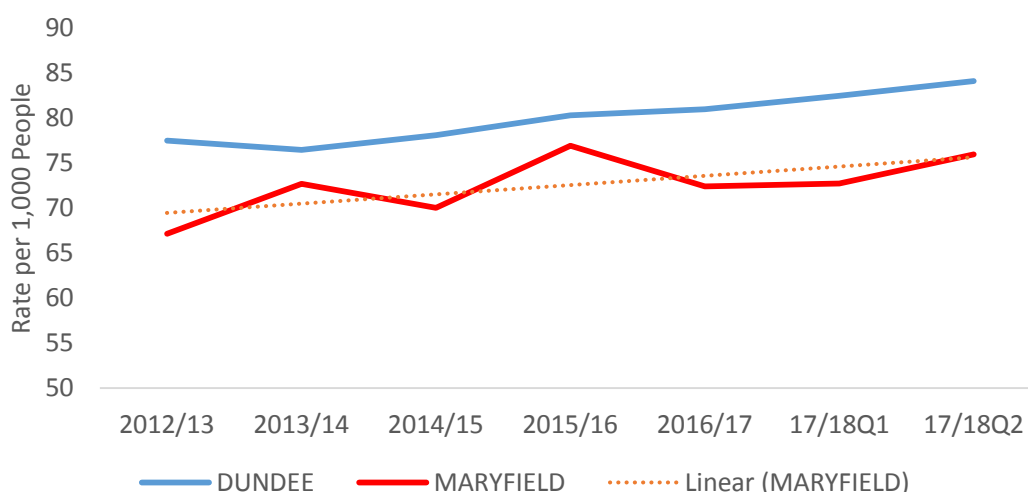
Chart 11 - Rate per 1,000 people of All Emergency Admissions in Maryfield for people aged 18-64, by Neighbourhood, Oct 16 - Sept 17



Source: SMR 01, 04 & 50 Records and Mid-year population estimates 2016, NRS

Over the past 5 years the rate of emergency admissions for people aged 18 - 64 in Dundee has increased slightly and peaked at 84 emergency admissions per 1,000 people in Q2 2017/18 from a rate of 77 in 2012/13. Maryfield's emergency admissions have varied over the 5 years but overall increased by 13% from a rate of 67 per 1,000 population in 2012/13 to a rate of 76 in Q2 of 2017/18.

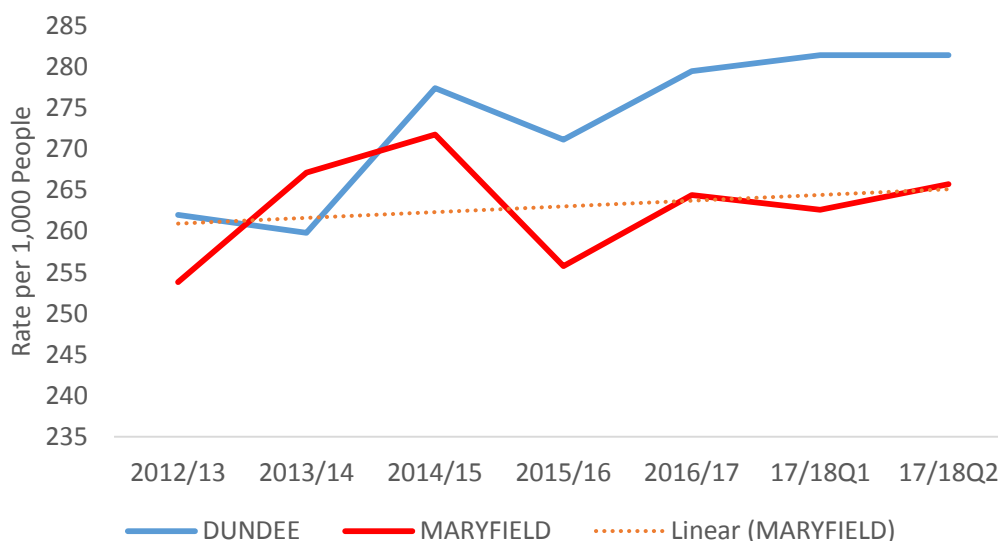
Chart 12 - Emergency Admission Rate per 1,000 people aged 18-64



Source: SMR 01, 04 & 50 Records and Mid-year population estimates 2016, NRS

Over the past 5 years emergency admissions for people aged 65+ in Dundee have increased and this included a significant increase between 2013/14 and 2014/15. Dundee's rate of emergency admissions increased by 7%. Maryfield's rate of emergency admissions has varied with a noticeable decrease in 2015/16, however the rate increased by 5% over the past 5 years.

Chart 13 - Emergency Admission Rate per 1,000 people aged 65+

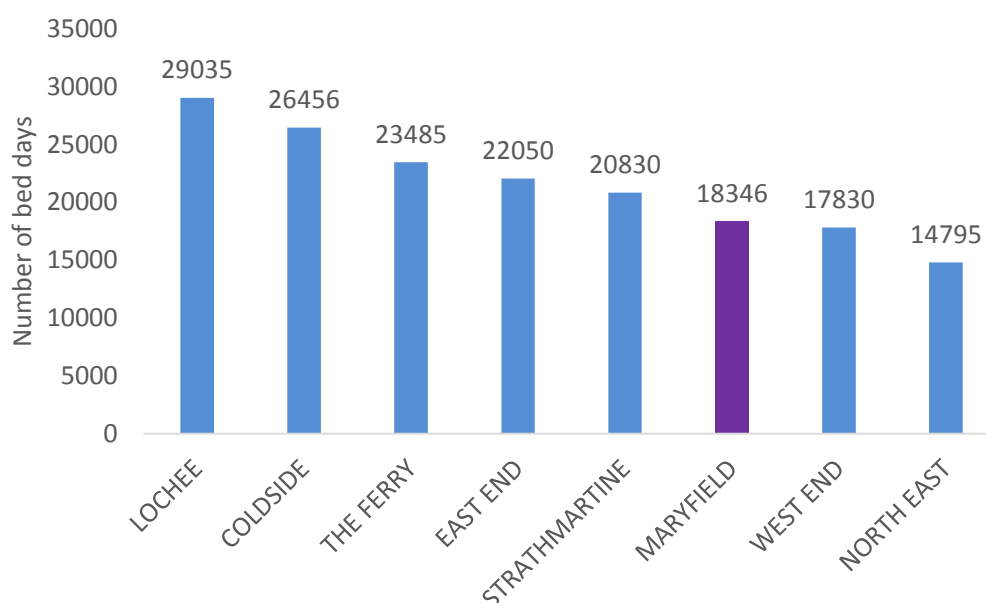


Source: SMR 01, 04 & 50 Records and Mid-year population estimates 2016, NRS

All Emergency Bed Days

Between October 2016 and September 2017 there were a total of 172,827 emergency bed days used for people aged 18+. Chart 14 shows that Maryfield had the third lowest number of emergency bed days with 18,346 emergency bed days.

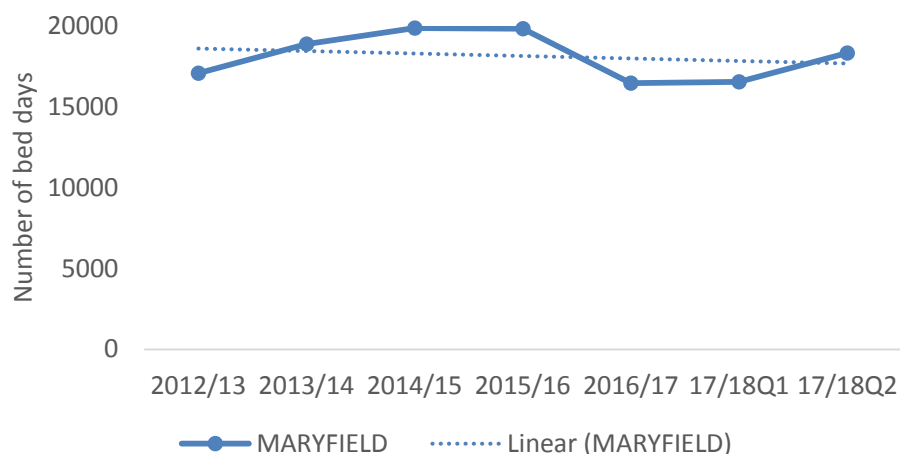
Chart 14 - Number of bed days between Oct 16 and Sept 17 for people aged 18+, by LCPP



Source: SMR 01, 04 & 50 Records

Over the past 5 years the number of emergency bed days for people aged 18+ has increased. There was an overall increase from 2012/13 to 2017/18, despite a noticeable decrease in 2016/17. Overall emergency bed days have increased by 7% between 2012/13 and Q2 of 2017/18.

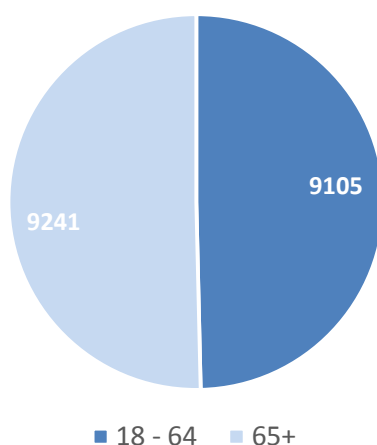
Chart 15 - Number of emergency bed days from Maryfield for people aged 18+



Source: SMR 01, 04 & 50 Records

Maryfield's total emergency bed days between October 2016 and September 2017 was 18,346 when we break this down the data shows that there are slightly more people aged 65+ having used emergency bed days.

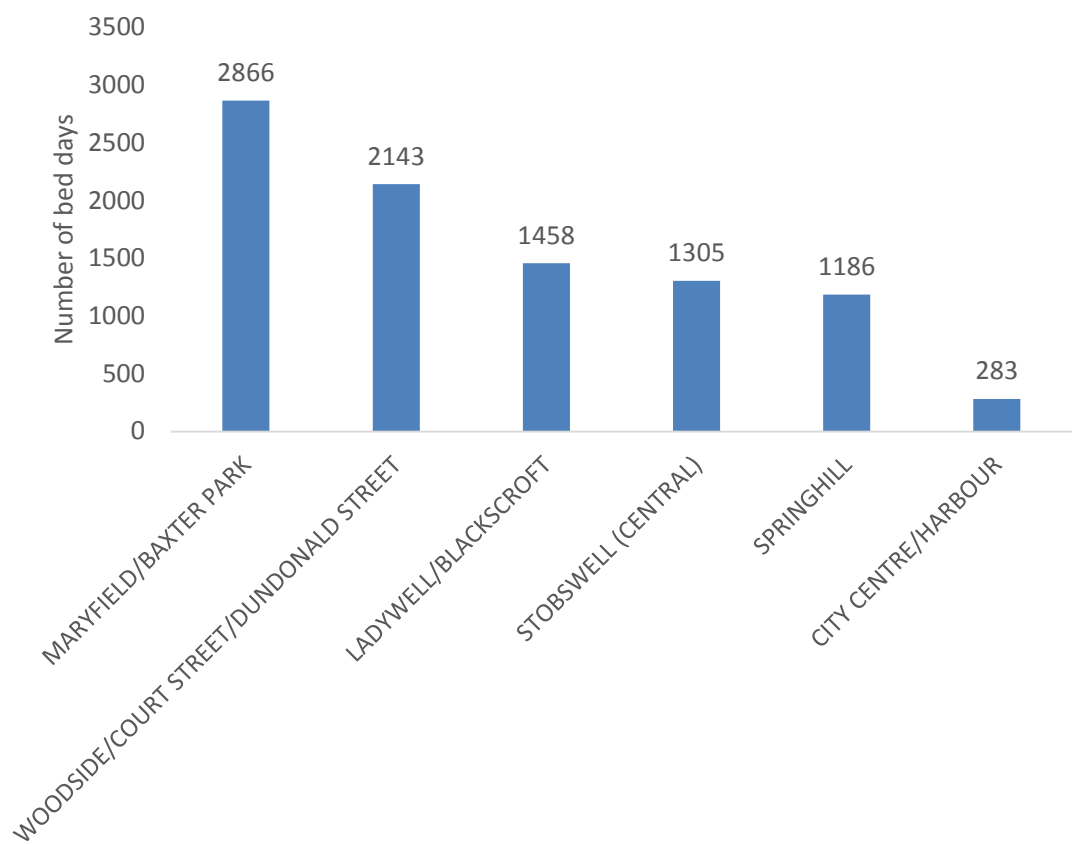
Chart 16 - Number of emergency bed days in Maryfield, Oct 16 - Sept 17



Source: SMR 01, 04 & 50 Records

Chart 17 shows that, of all emergency bed days for people aged 65+ in Maryfield, the highest number were from the Maryfield/ Baxter Park neighbourhood.

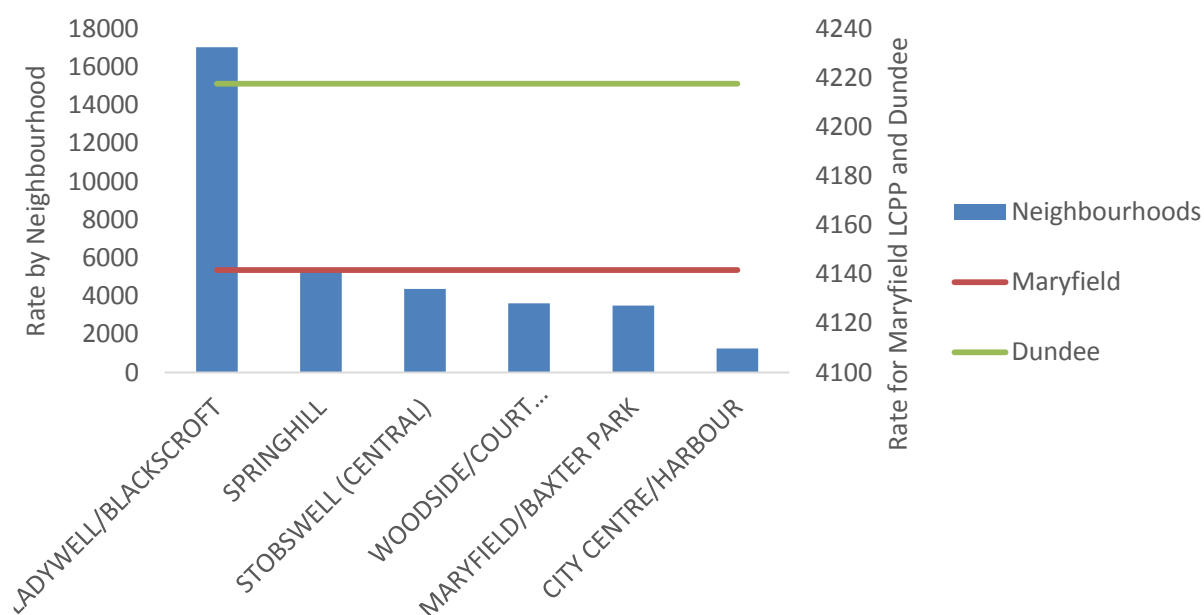
Chart 17 - Number of emergency bed days between Oct 16 - Sept 17 for people aged 65+, by Maryfield Neighbourhood



Source: SMR 01, 04 & 50 Records

However, when we compare the emergency bed day rate per 1,000 people in Maryfield aged 65+, taking into account the population of each neighbourhood, Ladywell/ Blackscroft had the highest rate of all emergency bed days. Between Oct 2016 and September 2017, the rate for Dundee was 4,218 per 1,000 population and Maryfield rate was 2% lower than this with 4,142 bed days per 1,000 population.

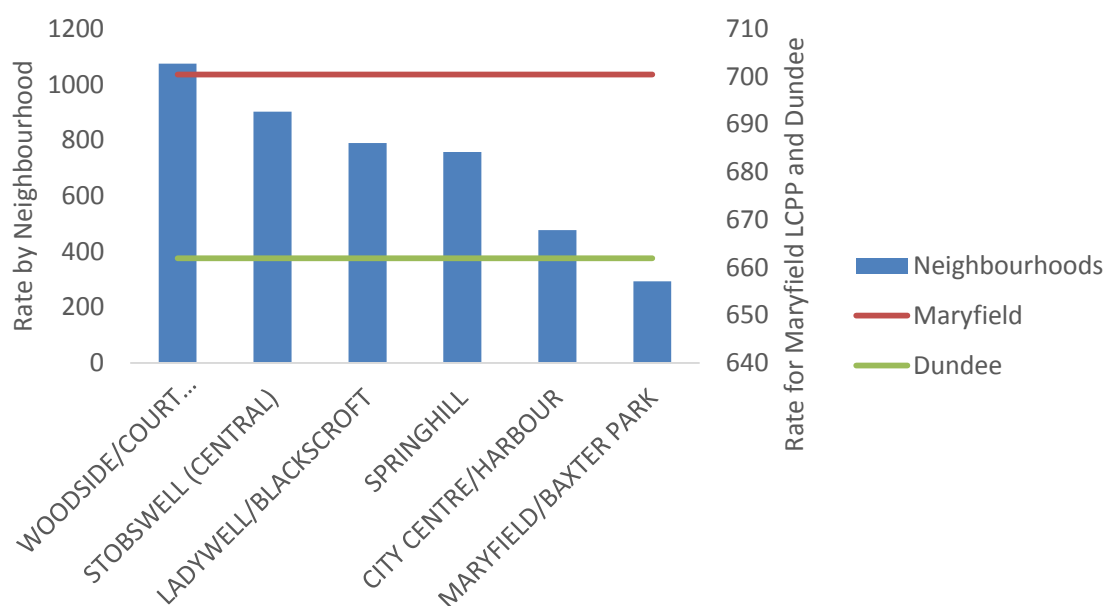
Chart 18 - Emergency bed day rate between Oct 16 - Sept 17 for people aged 65+, by Maryfield Neighbourhoods



Source: SMR 01, 04 & 50 Records and Mid-year population estimates 2016, NRS

When comparing all emergency bed days for people aged 18 - 64, Woodside/Court Street/Dundonald Street had the highest number of emergency bed days within Maryfield, when comparing all emergency bed days by the rate per 1,000 population Woodside/Court Street/Dundonald Street also had the highest rate of all emergency bed days. When comparing Maryfield to Dundee, Maryfield had a higher rate per 1,000 population of all emergency bed days than Dundee by 6%.

Chart 19 - Emergency bed day rate between Oct 16 - Sept 17 for people aged 18-64, by Maryfield Neighbourhoods

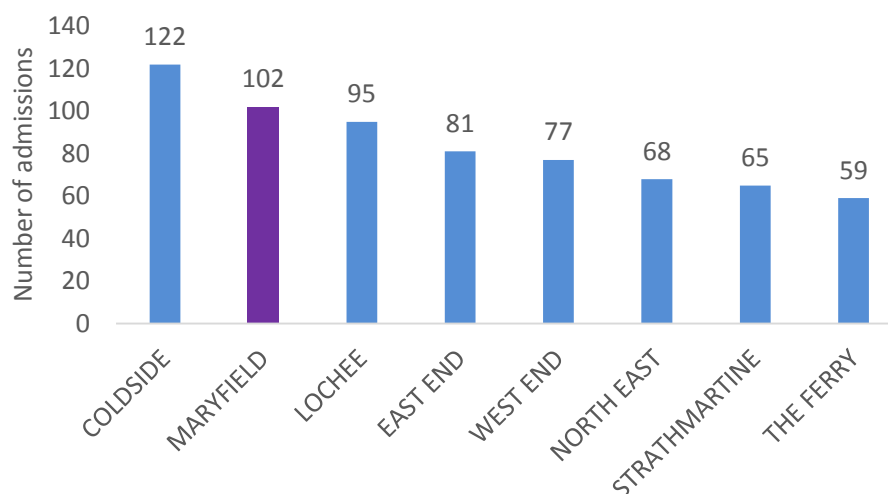


Source: SMR 01, 04 & 50 Records and Mid-year population estimates 2016, NRS

Mental Health Emergency Admissions

Between October 2016 and September 2017 there were 669 mental health emergency admissions for people aged 18+. Of these admissions 102 were admitted from Maryfield – the second highest in Dundee after Coldside.

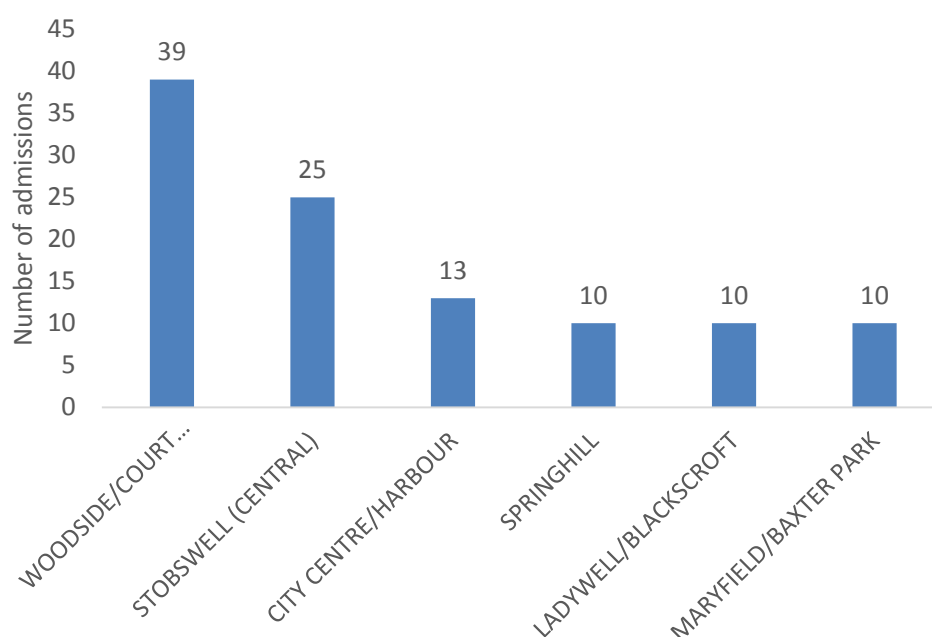
Chart 20 - Number of Mental Health emergency admission between Oct 16 - Sept 17 for people aged 18+, by LCPP



Source: SMR 04 Records

Chart 21 shows that within Maryfield, Woodside/Court Street/Dundonald Street had the highest number of 18+ emergency mental health admissions (39 admissions).

Chart 21 - Number of Mental Health emergency admissions between Oct 16 - Sept 17 for people aged 18+, by Maryfield neighbourhoods



*** Ladywell/ Blackscroft and Maryfield/ Baxter Park have values of <10 therefore have been rounded up to 10 to prevent identification.*

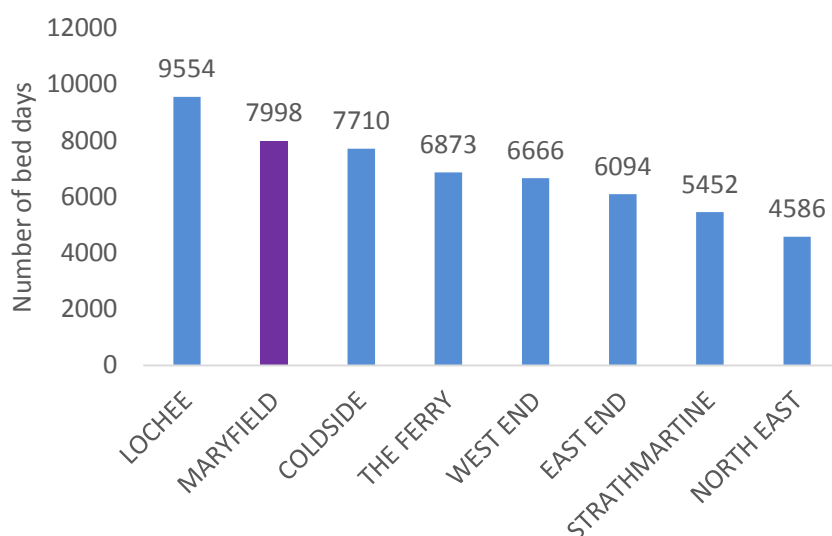
Source: SMR 04 Records

When we standardise the data and take into consideration the number of people within each of the neighbourhoods, Ladywell/ Blackscroft had the highest rate per 1,000 population, with Woodside/ Court Street/ Dundonald Street having the second highest rate of people being admitted with mental health needs aged 18+.

Mental Health Emergency Bed Days

Chart 22 shows that between October 2016 and September 2017 Maryfield was the LCPP with the second highest number of mental health emergency bed days for people aged 18+. The North East had the lowest number of mental health bed days.

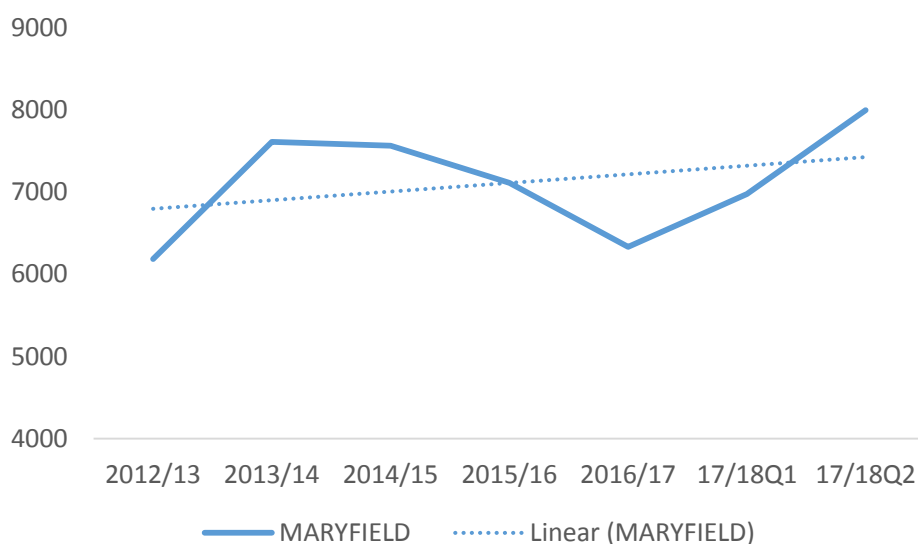
Chart 22 - Number of Mental Health emergency bed days between Oct 16 - Sept 17 for people aged 18+, by LCPP



Source: SMR 04 Records

The number of mental health emergency bed days has varied in Maryfield over the past 5 years. Overall the number has increased, by 29%, from 6,186 in 2012/13 to 7,998 in Q2 of 2017/18, for people aged 18+.

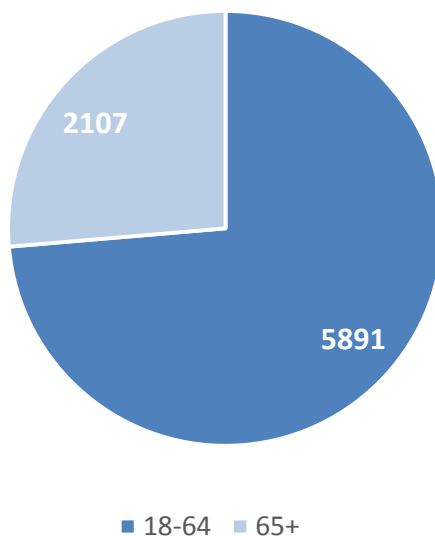
Chart 23 - Maryfield's Mental Health Emergency Bed Days



Source: SMR 04 Records

The total number of mental health emergency bed days in Maryfield, between October 2016 and September 2017 was 7,998. When we break this down chart 24 shows that the majority of the mental health emergency bed days were allocated to people aged between 18 - 64.

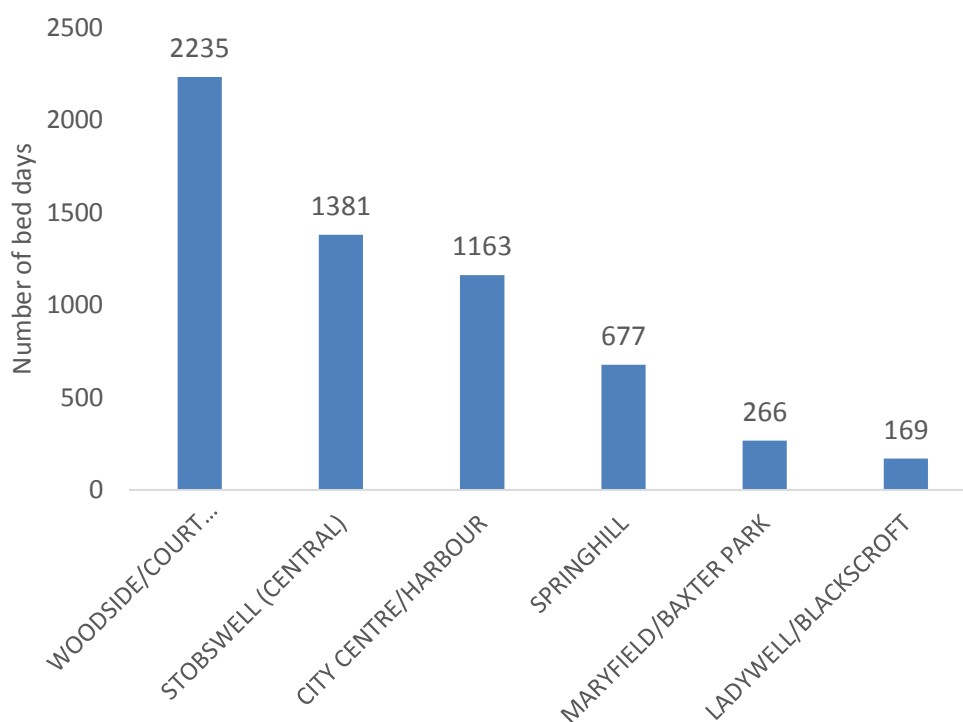
Chart 24 - Number of Mental Health emergency bed days in Maryfield, Oct 16 - Sept 17, by age



Source: SMR 04 Records

Chart 25 shows that of those people aged 18-64 the majority of bed days were from the Woodside/ Court Street/ Dundonald Street area and only 3% (169) were from Ladywell/ Blackscroft.

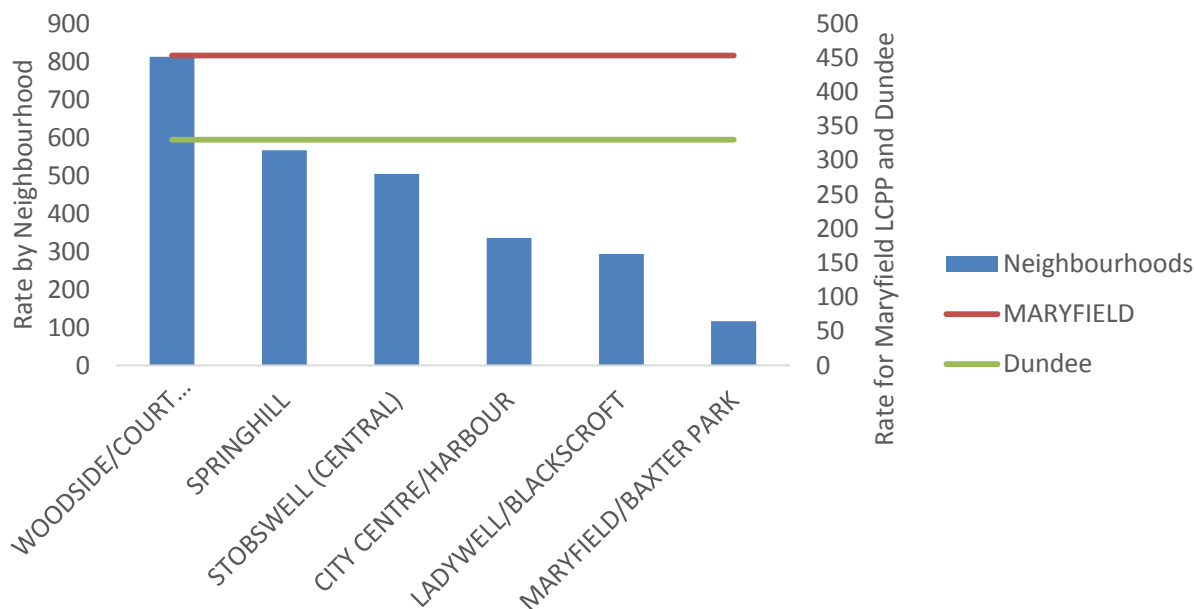
Chart 25 - Number of Mental Health emergency bed days between Oct 16 - Sept 17 for people aged 65+, by Maryfield Neighbourhoods



Source: SMR 04 Records

Chart 26 shows that when we compare the rate per 1,000 people in Maryfield’s neighbourhoods, taking into account the population of each neighbourhood, the data shows that Woodside/ Court Street/ Dundonald Street had the highest rate of mental health emergency bed days. The Dundee rate was 330 mental health emergency bed days per 1,000 population with Maryfield higher at 453 mental health emergency bed days per 1,000 population.

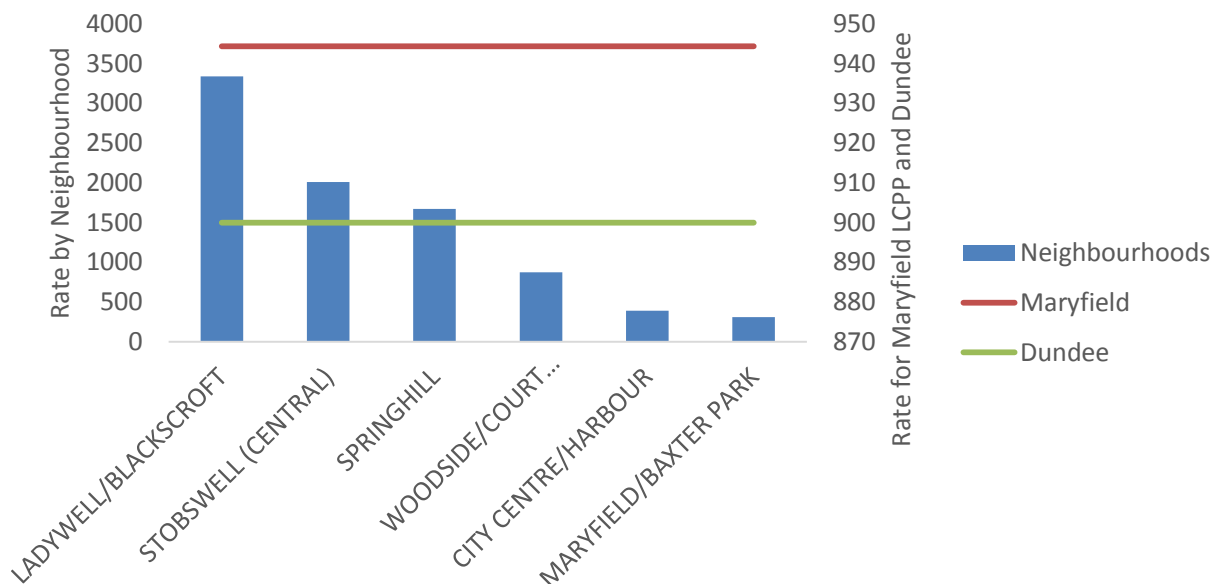
Chart 26 - Emergency Mental Health bed day rates between Oct 16 - Sept 17 for people aged 18-64, by Maryfield Neighbourhoods



Source: SMR 04 Records and Mid-year population estimates 2016, NRS

When comparing mental health emergency bed days for people aged 65+, Stobswell (Central) had the highest number of mental health emergency bed days within Maryfield. When comparing mental health emergency bed days by the rate per 1,000 population Ladywell/ Blackcroft had the highest rate with Stobswell (Central) having the second highest rate. When comparing Maryfield to Dundee chart 27 shows that Maryfield had a higher rate of emergency bed days than Dundee by 5%.

Chart 27 - Emergency Mental Health bed days rate between Oct 16 - Sept 17 for people aged 65+, by Maryfield Neighbourhood

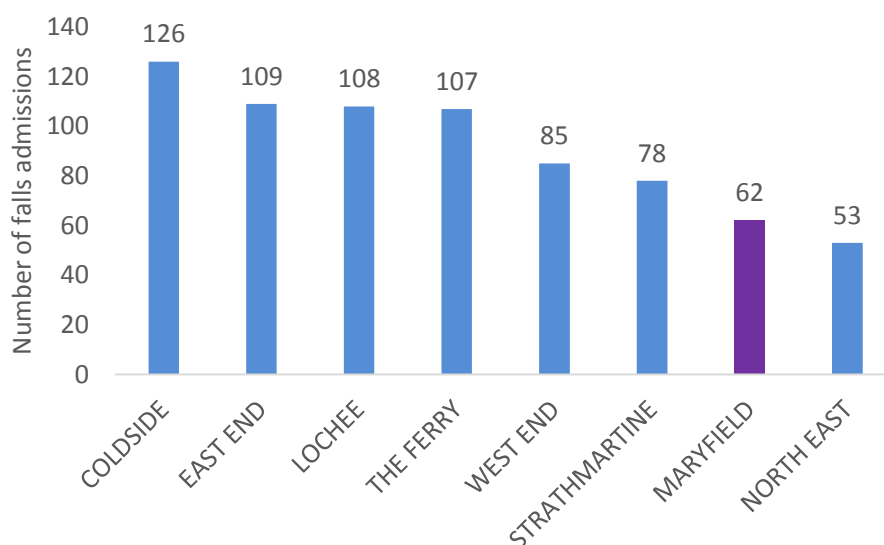


Source: SMR 04 Records and Mid-year population estimates 2016, NRS

Falls

From 2012/13 to Q2 2017/18 falls for people aged 65+ in Dundee have increased by 22%. In Maryfield falls have increased by 55%, from 40 falls in 2012/13 to 62 falls in Q2 of 2017/18.

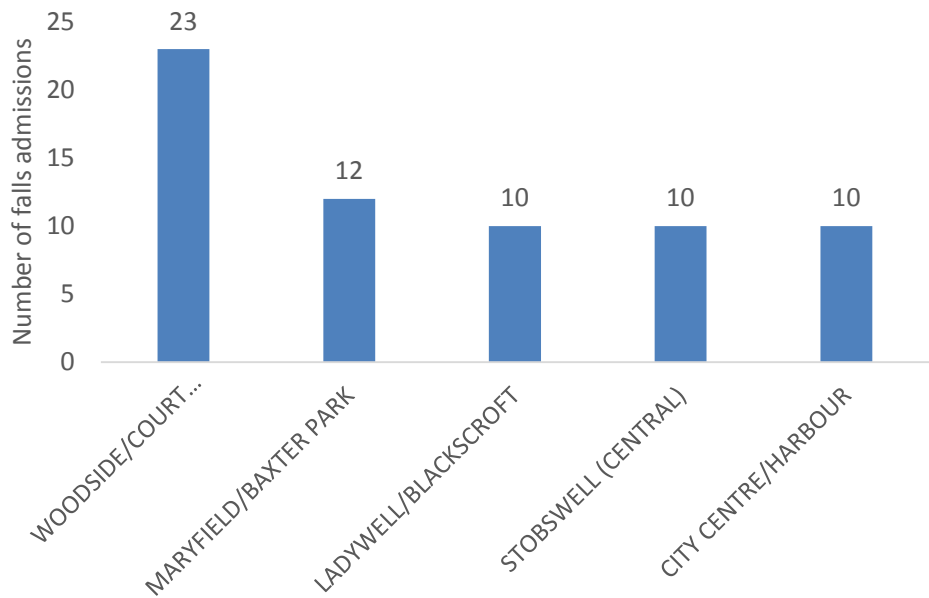
Chart 28 - Number of falls admissions between Oct 16 - Sept 17 for people aged 65+, by LCPP



Source: SMR 01 Records

Chart 29 shows that Woodside/ Court Street had the highest number of falls admissions for people aged 65+ within the Maryfield Neighbourhood.

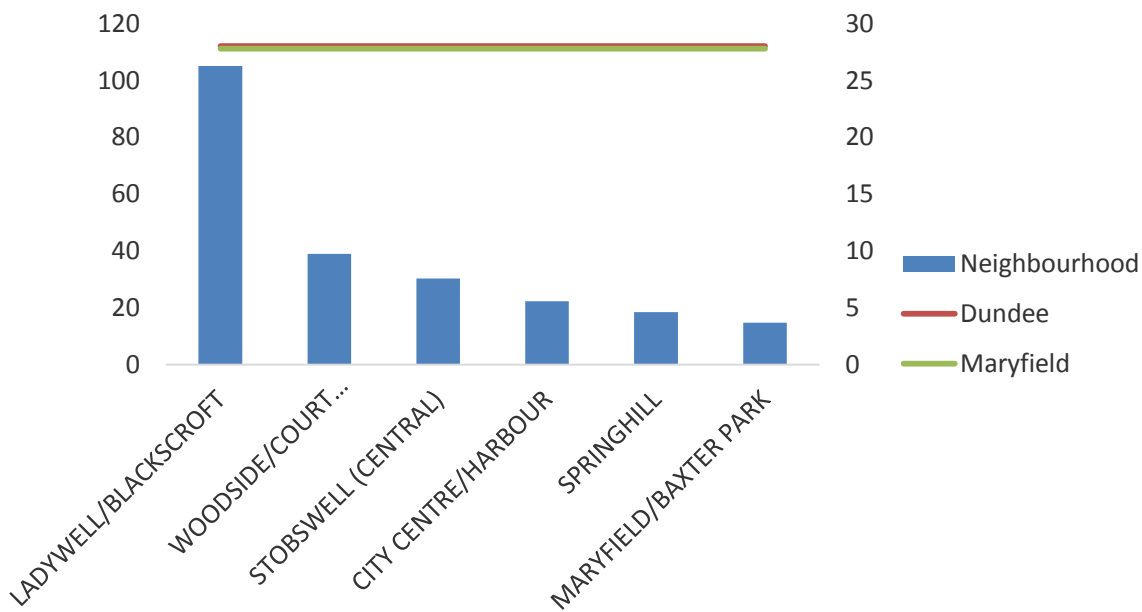
Chart 29 - Number of falls admissions between Oct 16 - Sept 17 for people aged 65+, by East End Neighbourhood



Source: SMR 01 Records
**Ladywell/ Blackcroft, Stobswell (Central) and City Centre/ Harbour have a values of <10 therefore have been rounded up to 10 to prevent identification.
** Springhill has been excluded as values <5 to prevent identification

Chart 30 shows that when we compare the rate of falls per 1,000 population in Maryfield, Ladywell/ Blackcroft had the highest rate of hospital admissions due to a falls. Ladywell/ Blackcroft also had a higher rate than Maryfield (28) and Dundee (28).

Chart 30 - Falls rate between Oct 16 - Sept 17 for people aged 65+, by Lochee neighbourhoods

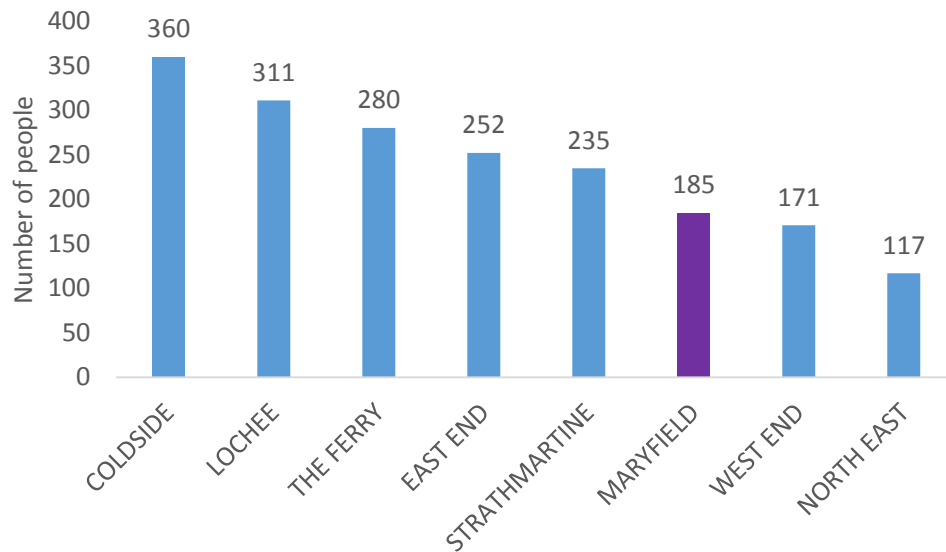


Source: SMR 01 Records and Mid-year population estimates 2016, NRS

Home Care

Chart 32 shows that in Dundee, at a snapshot week at the end of March 2017, there were 1911 people receiving home care with a total of 9,037 Local Authority hours being provided. In Maryfield there are 185 people receiving home care with a total of 904 Local Authority hours being provided.

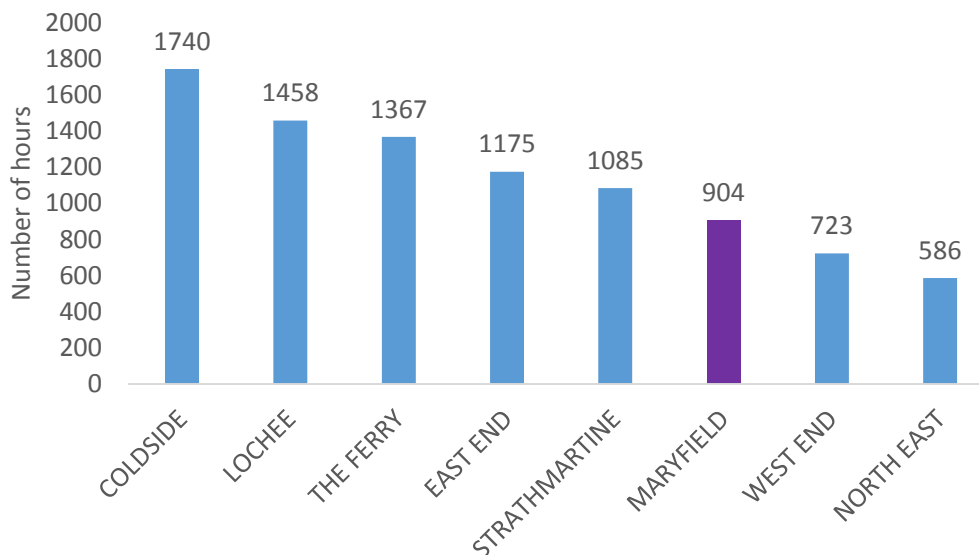
Chart 32 - Number of people receiving home care at March 2017, by LCPP



Source: Social Work Database, K2

Chart 33 shows that Maryfield had the third lowest number of home care hours with 904 hours in total.

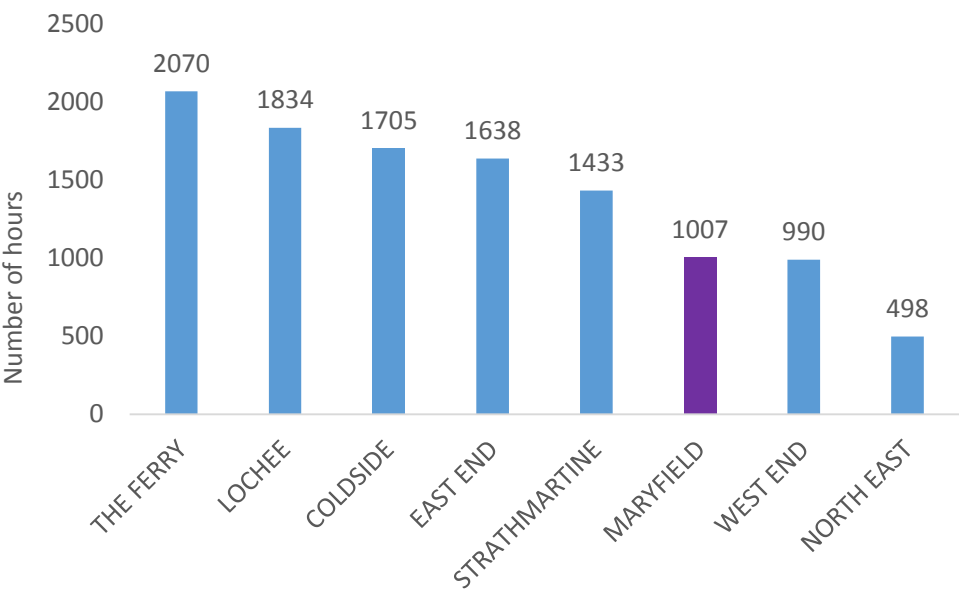
Chart 33 - Number of LA Hours Provided to clients, by LCPP



Source: Social Work Database, K2

Chart 34 shows that Maryfield had the third lowest number of private and voluntary hours provided with 1,007 hours in total.

Chart 34 - Number of Private & Voluntary Hours provided to clients, by LCPP



This Locality Profile was prepared by Lisa Traynor, Information Assistant, Strategy and Performance, Dundee Health and Social Care Partnership.

If you have any queries or require this information in alternative formats please email

spssinformationteam@dundee@dundeecity.gov.uk

or Telephone 01383 434000