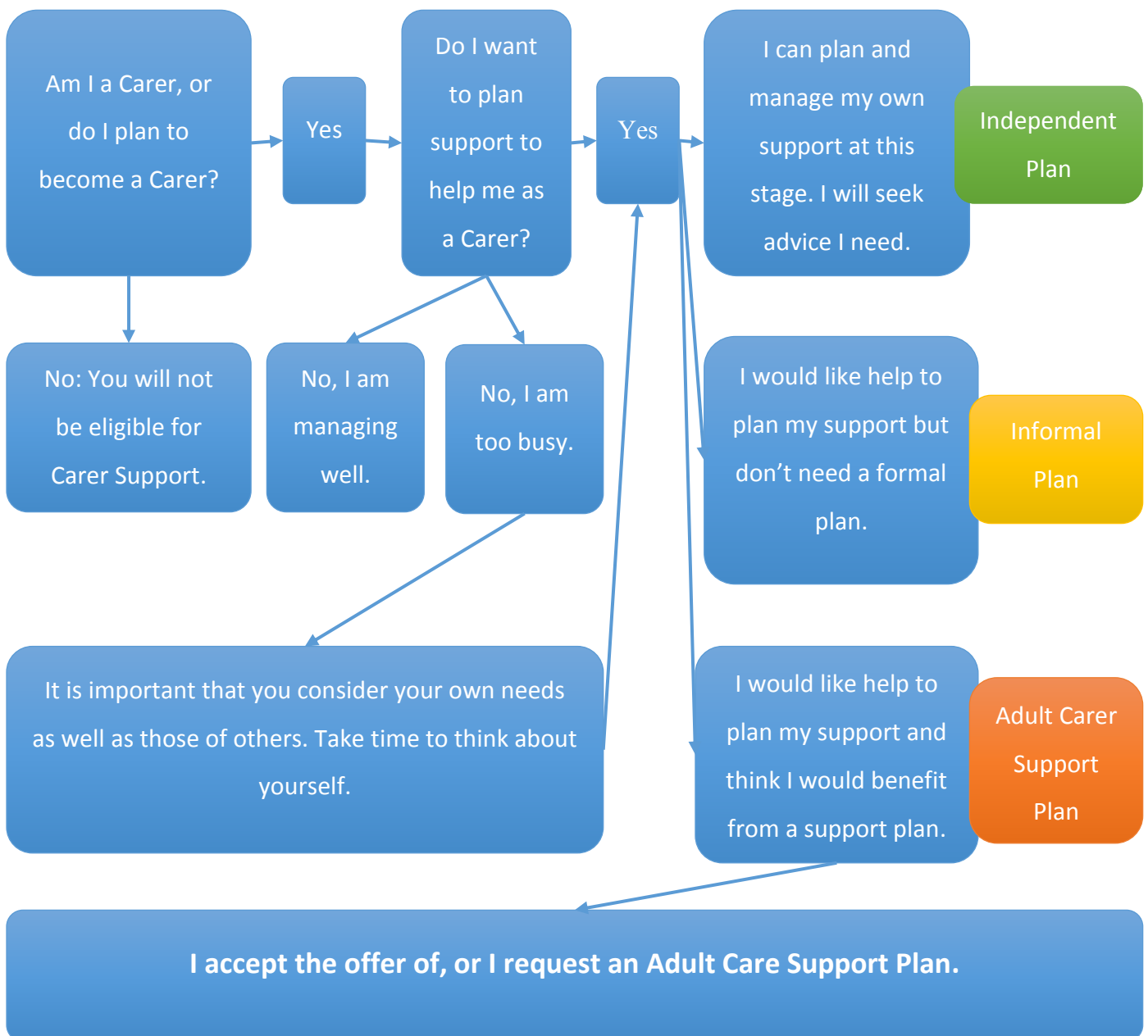




DUNDEE CARERS PARTNERSHIP INFORMATION FACTSHEET No. 9

Adult Carers Eligibility Criteria

Your choices as an adult carer (18 years and over)





The Next Steps

I discuss my circumstances and outcomes with an assessor, and let the assessor know who else can contribute information to my assessment



Together with the assessor, we analyse the assessment information and agree how much risk there will be that I will not achieve my outcomes as a carer



The assessor and I discuss my outcomes as a carer. Carers outcomes are grouped under the following outcome areas: Health, A Good Lifestyle, Managing the Caring Role, and Finances. I have a chance to say what outcomes I want to achieve and/or maintain the support I might need to do this. The four outcome areas are from the eligibility criteria for Dundee



Together with the assessor, I will consider whether I can achieve the outcomes I want now, and in the future. We will identify the level of risk that I will not achieve outcomes in each of the outcome areas. There are four risk categories: No/Low Risk, Medium Risk, High Risk, and Very High Risk.

In Dundee, Carers who are at high risk in any outcome area will reach the eligibility threshold. The threshold is based on the impact their caring role has. Carers above this threshold could receive a Funded Support Plan if the available supports are not sufficient, or not the best way to meet their individual outcomes. Self-Directed Support should be offered to the carer for their funded Support Plan. The Carers Self-Directed Support Budget will not include payments to pay for the care services for the person the carer supports as these are funded via the assessment of the person the carer supports.



I will have an Adult Carer Support Plan which lists the planned support towards achieving my outcomes as a carer. The supports can include family, friends, community supports, and health supports etc. as well as specialist carer support. If I have reached the eligibility threshold in any outcome area some of support I get can be funded specifically for me. This is arranged as Self-Directed Support. The Adult Carer Support Plan will be monitored and reviewed.



Dundee Adult Carers Outcomes



These outcomes are the agreed Eligibility Criteria for Adult Carers in Dundee

Red indicates a Carer who is at very high risk of not achieving any one or more Carers Outcomes.

Red-Amber indicates a high risk of not achieving any one or more Carers Outcomes.

Amber indicates a medium risk. Some carers may be at risk of not fully achieving all four outcomes. If a carer has amber in any domain, but greens in the others, they will be categorised as at medium risk

Green indicates no risk, or a low risk to achieving outcomes. Carers may choose to access supports in the community, or from friends and family. They can also access carer support and advice from other agencies

Eligible carers can have support individually funded as part of their support plan. The **eligibility threshold in Dundee is set at Very High**

There will be supports for every carer in Dundee. Carers can get support with or without an Adult Carer Support Plan